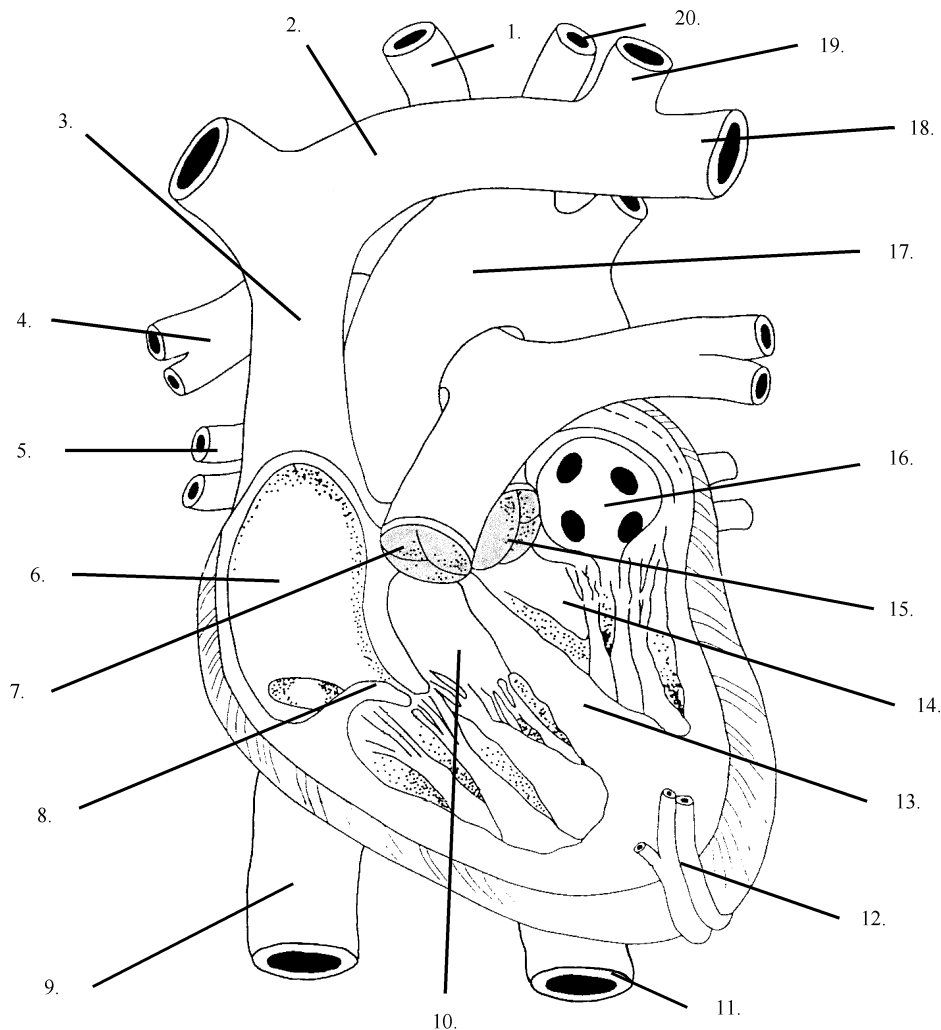
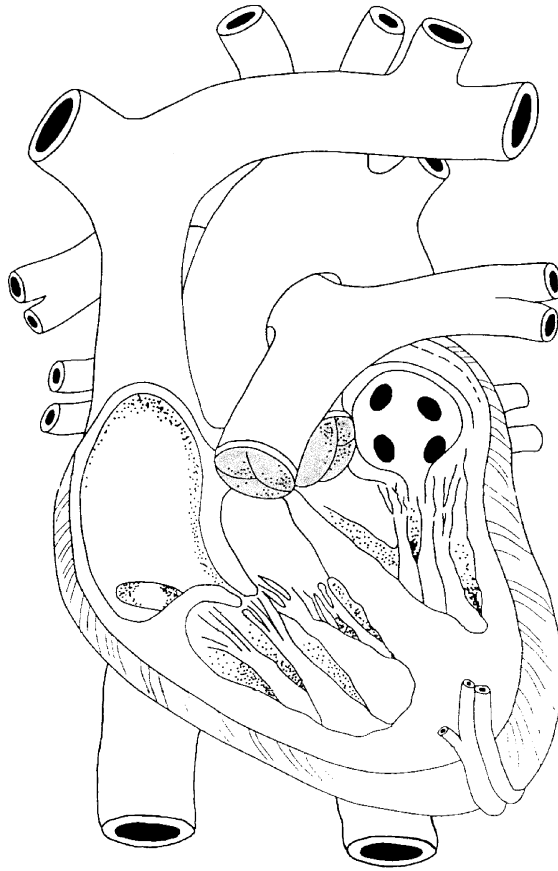


Procedure:

In the diagram below, label the appropriate parts. Use the following terms: right and left atria, right and left ventricles, septum, superior and inferior vena cava, pulmonary valve, aortic valve, right and left A-V valves, pulmonary arteries and veins, cardiac artery or vein, aortic arch, aorta, brachiocephalic artery and vein, left jugular vein, left subclavian vein, and left common carotid artery.

**Analysis of Results:**

1. Color the heart diagram on the next page in the following manner. Oxygenated vessels are to be **red**; deoxygenated vessels **blue**. The four valves are to be **green** and the septum **yellow**.
2. Complete the heart diagram on the next page by using arrows to show the direction of blood flow.



3. Compare and contrast the atria and ventricles.

4. If this were a fetal heart, there would be some minor differences. Research these terms and explain their purpose.
 - a. ductus arteriosus

 - b. foramen ovale

5. Humans have a double loop circulatory system. Which side of the heart is in reference to the pulmonary circuit? Where does this blood go? The other circuit or loop is called the systemic circuit. What major veins and artery are involved with this loop?